



PP

PERFORIRANI VRTINČNI DIFUZOR PERFORATED SWIRL DIFFUSER

OPIS:

Perforirani vrtinčni difuzor je namenjen dovodu in odvodu zraka iz prostora. Primeren je za vgradnjo v spuščene stropce.

KONSTRUKCIJA:

- **PP** v celoti perforiran kvadraten difuzor
 - 54 % perforacija, luknjice fi 6 mm
- **PP-A** kvadraten difuzor z ne perforiranim robom
 - 38 % ali 43% perforacija, luknjice fi 6 mm
 - 69 % perforacija, luknjice 10x10 mm
 - 77 % perforacija, luknjice 15x15 mm
- **PP-B** kvadraten difuzor z ne perforiranim robom in osem kotnikom v sredini plošče
 - 38 % ali 43 % perforacija, luknjice fi 6 mm
- na željo kupca se izdelava poljubna velikost difuzorja in oblika perforacije (opcije je potrebno preveriti pri proizvajalcu)

MATERIAL:

- pocinkana pločevina (standard 0,7 mm, opcije 0,6-1 mm)
- nerjaveča pločevina INOX AISI 304 B2 0,6 mm (samo tip PP 6-54, PP 6-54/C1, PP 10x10-69 in PP 15x15-77)

BARVA:

bela barva RAL 9010 MAT ali poljubna barva po RAL lestvici

MONTAŽA:

- montaža na spuščeni strop
- pritrditev s centralnim vijakom na komoro PB-2

DODATKI:

Komora PB-2 – ohišje, priklop, obešala.

Na željo kupca se komori doda:

- prečka
- regulacijska loputa z zunanjo in notranjo ročico
- perforirana razpršilna pločevina
- utor s tesnilnim obročem na priklopu
- izolacija debeline 6, 10, 13 ali 19 mm na zunanji ali notranji strani

DESCRIPTION:

The perforated swirl diffuser is used to supply and exhaust air from the room. It is suitable for installation on dropped ceilings.

CONSTRUCTION:

- **PP** fully perforated square diffuser
 - 54 % perforation, fi 6 mm holes
- **PP-A** square diffuser with non-perforated edge
 - 38 % or 43 % perforation, fi 6 mm holes
 - 69 % perforation, 10x10 mm holes
 - 77 % perforation, 15x15 mm holes
- **PP-B** square diffuser with non-perforated edge and an octagon in the centre of the panel
 - 38 % or 43 % perforation, fi 6 mm holes
- any diffuser size and perforation shape can be produced on request (options to be checked with the manufacturer)

MATERIAL:

- galvanized sheet metal (standard 0,7 mm, options: 0,6-1 mm)
- stainless steel sheet metal INOX AISI 304 B2 0,6 mm (types PP 6-54, PP 6-54/C1, PP 10x10-69 and PP 15x15-77 only)

FINISH:

RAL 9010 MAT white, or any colour from the RAL palette

INSTALLATION:

- installation on ceiling panels
- with one central screw on the plenum box PB-2

SUPPLEMENTS:

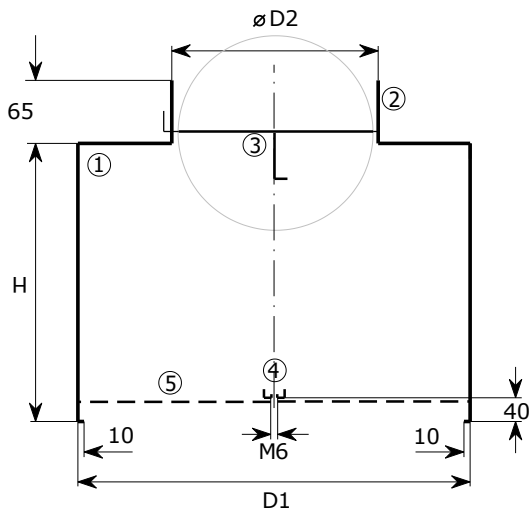
Plenum box PB-2 – casing, connection opening, hangers.

Per customer's request, the following can be added:

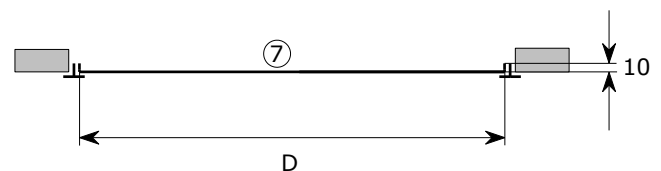
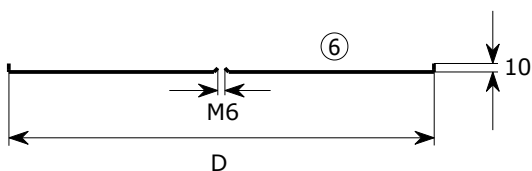
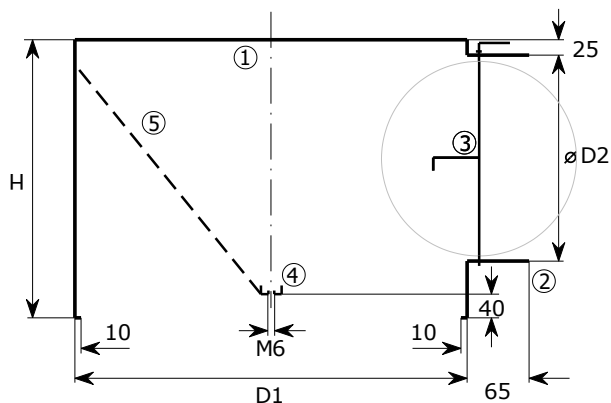
- traverse for mounting the diffuser
- damper with handle inside and outside
- perforated dispersing plate
- sealing ring on the connection opening
- insulation 6, 10, 13 or 19 mm on the inside or on the outside of the casing

DIMENZIJE / DIMENSIONS:

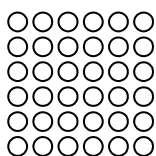
| | D | D1 | Ø D2 | | H | |
|------------|-----|-----|------|-----|-----|-----|
| 400 | 495 | 391 | 158 | 198 | 230 | 270 |
| 600 | 595 | 591 | 198 | 248 | 270 | 320 |
| 625 | 620 | 616 | 248 | 313 | 320 | 385 |



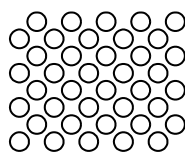
1. komora PB-2
plenum PB-2
2. okrogla priključna odprtina
round connection opening
3. regulacijska loputka
volume control damper
4. prečka
traverse
5. perforirana razpršilna plošča (samo za dovod)
perforated dispersing plate (only for supply)
6. difuzor s centralno luknjo
diffuser with central hole
7. difuzor brez centralne luknje
diffuser without central hole



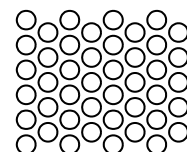
PP 6-38
luknja / hole fi 6 mm 38 %



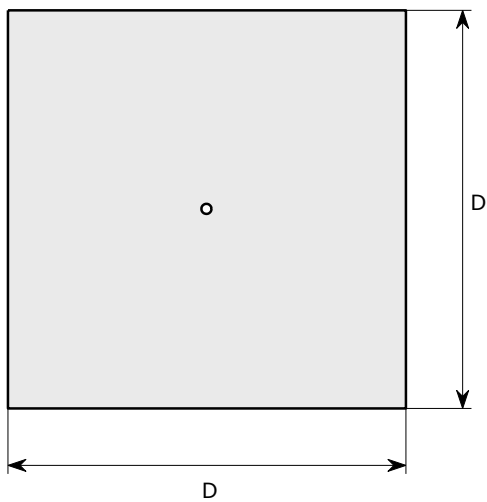
PP 6-43
luknja / hole fi 6 mm 43 %



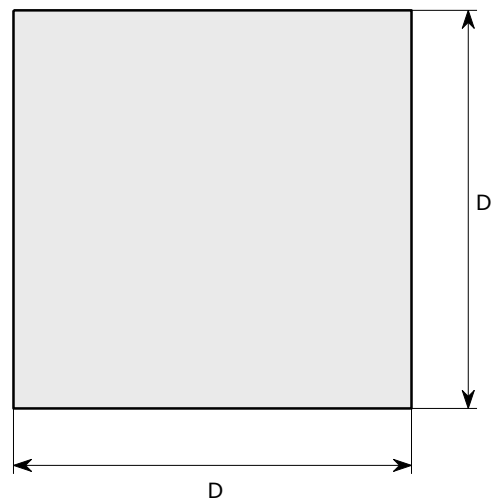
PP-6-54
luknja / hole fi 6 mm 54 %



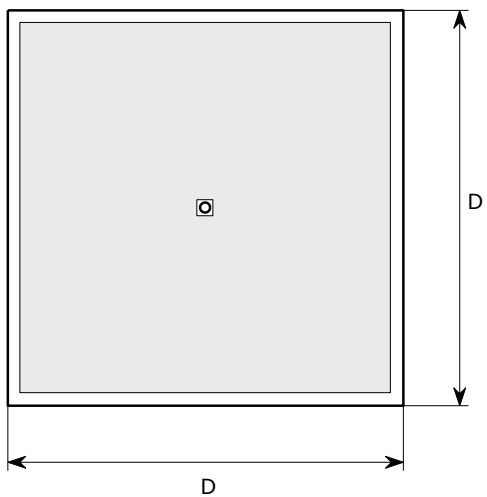
PP 6-54 / C1



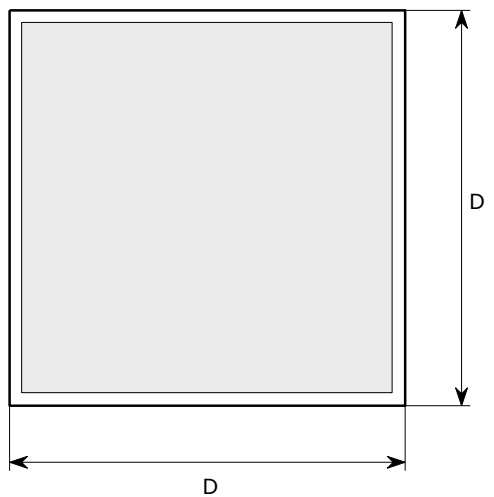
PP 6-54



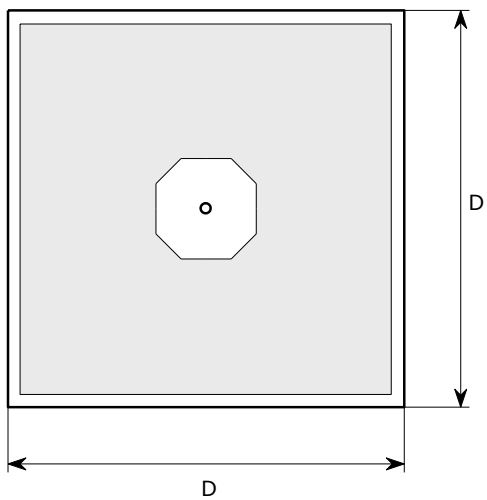
**PP 6-38 / A / C1
PP 6-43 / A / C1
PP 10x10-69 / A / C1
PP 15x15-77 / A / C1**



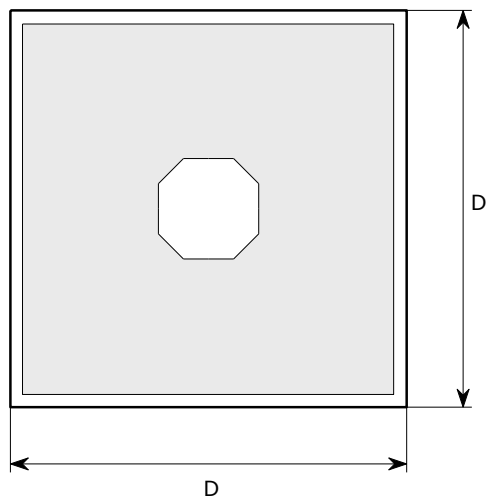
**PP 6-38 / A
PP 6-43 / A
PP 6-54 / A
PP 10x10-69 / A
PP 15x15-77 / A**



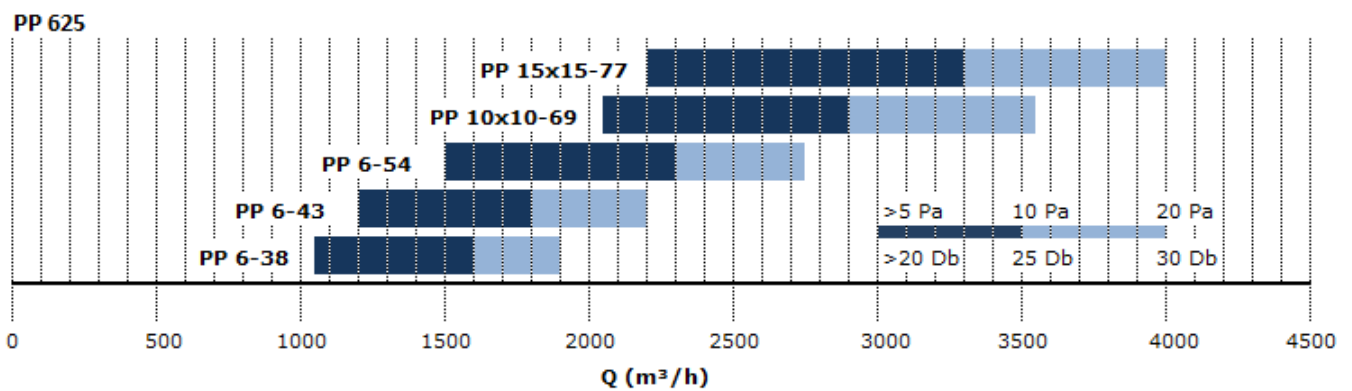
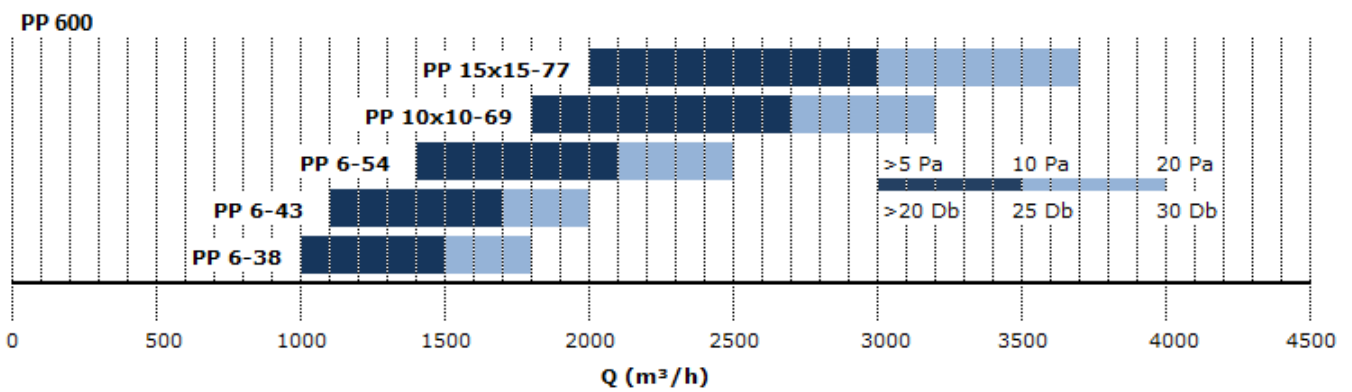
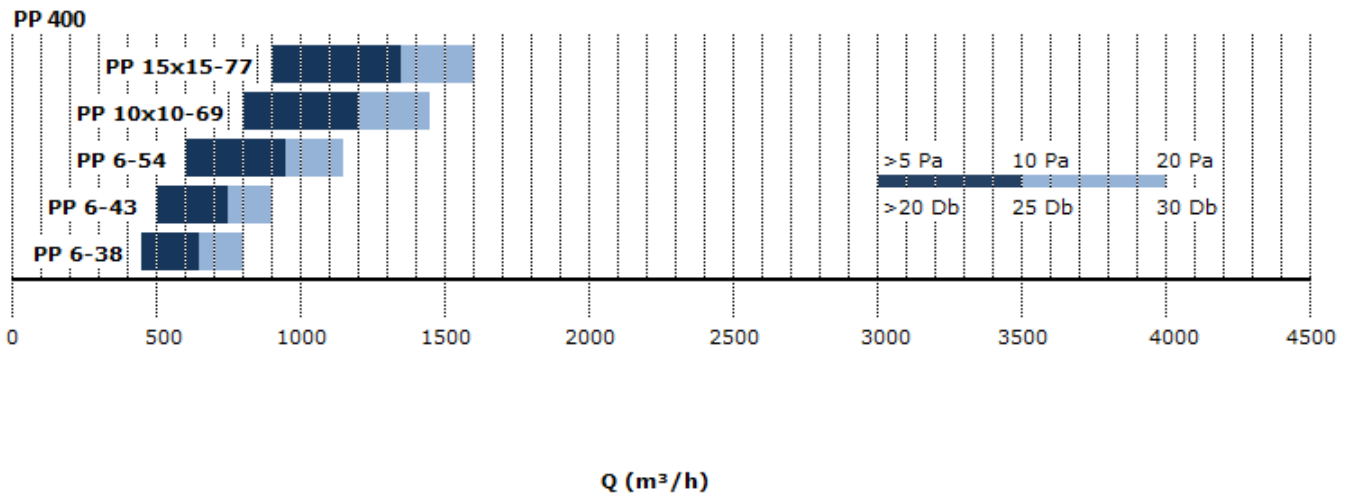
PP 6-38 / B / C1



PP 6-38 / B



HITRA IZBIRA / FAST SELECTION:



NAČIN NAROČANJA / HOW TO ORDER:

| PP 6-54 | C1 | 600 | RAL 9010 MAT | PB-2 | 600 | / | 200 | H | PR / ISO 6mm |
|----------------------------------------------------------------------------------------------------------------------------------------------------------------------------------------------------------------------------------------------------------------------------------------------------------------------------------------------------------------------------------------------------------------------------------------------------------------------------------------------------------------------------------------------------------------------------------------------------------------------------------------------------------------------------------------------------------------------------------------------------------------------------------------------------------------------|----|-----|--------------|--------------------------------------------------------|-----|-------------------------------------------------------------------------------------------------------------------------------------------------------------------------------------------------------------------------------------------------------------------------------------------------------------------------------------------------------------------------------------------------------------------------------------------------------------------------------------------------------|-----|---|--------------|
| <p>barva / colour standard RAL 9010 MAT</p> <p>dimenzija / dimension standard 400, 600, 625 poljuben / optional</p> <p>montaža / installation C1 - centralna luknja za vijak (montaža na komoro) / central hole for screw (installation on plenum box) / - brez centralne luknje (montaža na modularni spuščeni strop) / without central hole (installation on suspended modular ceiling)</p> <p>/ v celoti perforiran difuzor / fully perforated diffuser A - ne perforiran rob / non-perforated edge B - ne perforiran rob in osem kotnik v sredini plošče / non-perforated edge and an octagon in the centre</p> <p>tip difuzorja / diffuser type PP 6-54 PP 6-43 PP 6-38 PP 10x10-69 PP 15x15-77 PP ...</p> | | | | <p>komora / plenum PB-2 komora / plenum</p> | | <p>ISO - izolacija / insulation 6, 10, 13, 19 mm</p> <p>PR - prečka /traverse</p> <p>L - loputa / damper</p> <p>PP - perforirana plošča perforated plate</p> <p>pozicija priključka position of connection H - horizontalen / horizontal V - vertikalni / vertical</p> <p>priključek / connection opening standard 200, 250, 315 poljuben / optional</p> <p>dimenzija komore / plenum dimension</p> | | | |